

SERIES

Pears, Plums and Poppies

DATE RANGE

2021

MEDIUM

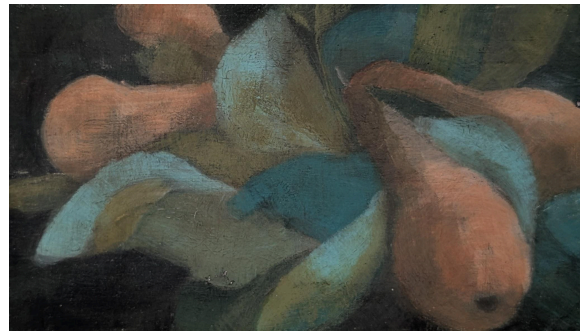
Egg tempera on gesso board

DESCRIPTION

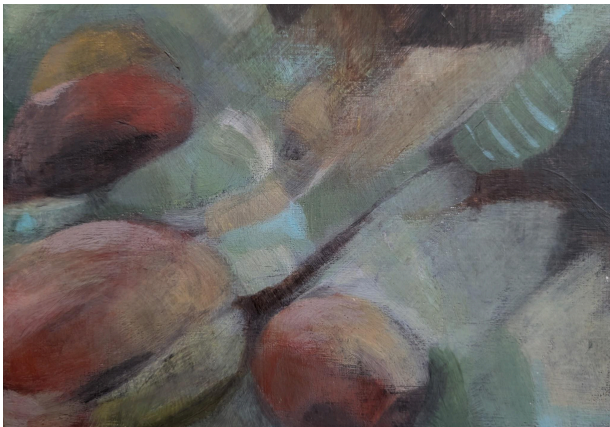
This series of small works represents a dialogue between historical practices and contemporary painting. Pears, plums, and poppy seeds, gathered from the monks' garden during a residency in Glenstal Abbey in Ireland, served as an anchor for exploring form and its deconstruction—drawing upon the old masters' technique of egg tempera.



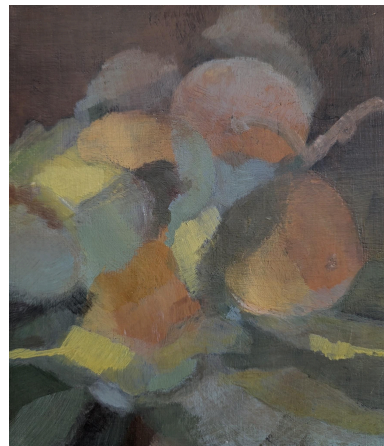
#01
egg tempera on gesso board
20.5 x 19 cm, 2021



#02
egg tempera on gesso board
16 x 22 cm, 2021

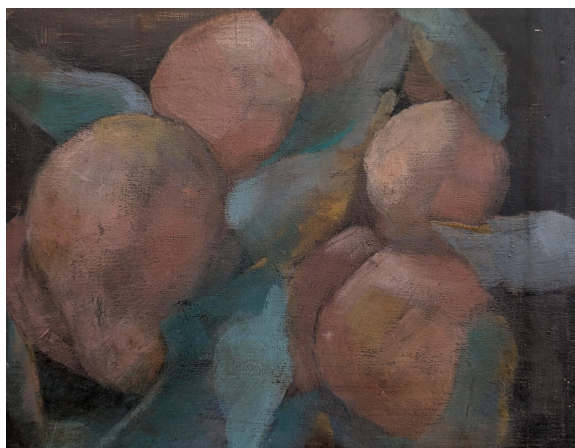


#03
egg tempera on gesso board
15.5 x 26.5 cm, 2021

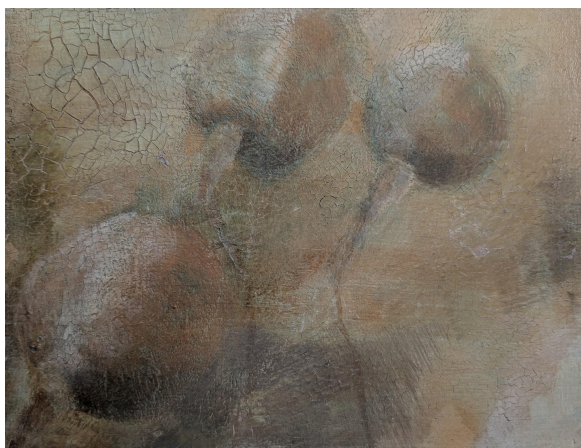


#04
egg tempera on gesso board
21 x 18 cm, 2021

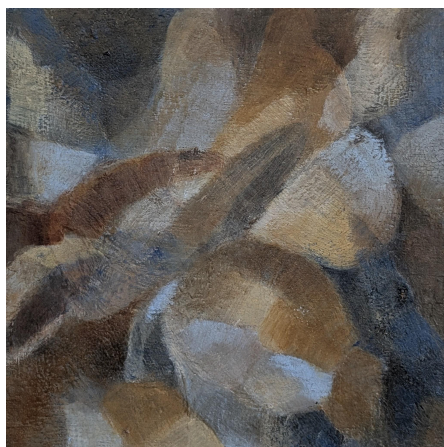
SABINE LACEY - ARCHIVE
Pears, Plums and Poppies



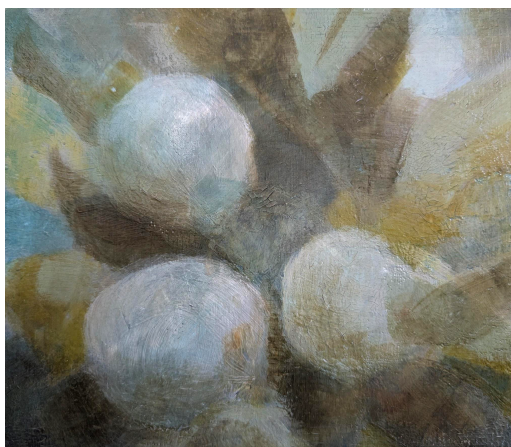
#05
egg tempera on gesso board
25 x 32 cm, 2021



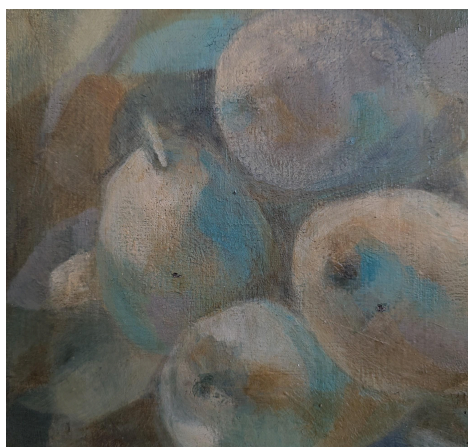
#06
egg tempera on gesso board
16 x 21 cm, 2021



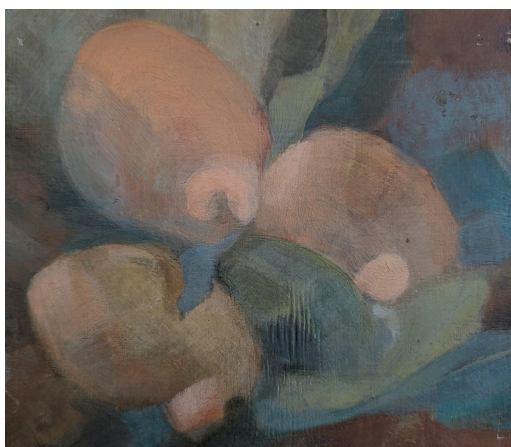
#07
egg tempera on gesso board
16 x 16 cm, 2021



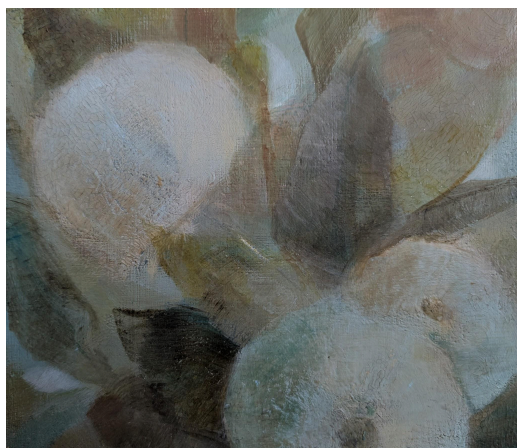
#08
egg tempera on gesso board
18 x 21 cm, 2021



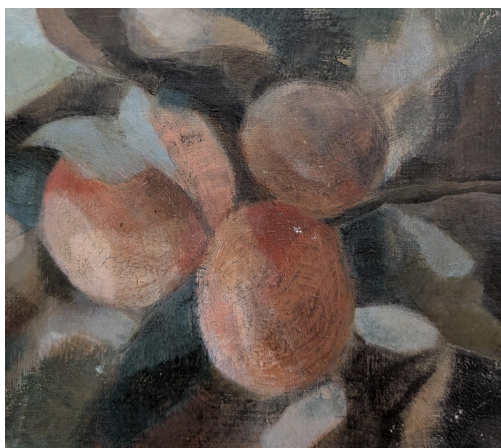
#09
egg tempera on gesso board
18 x 21 cm, 2021



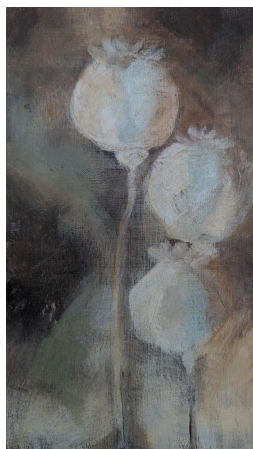
#10
egg tempera on gesso board
18 x 21 cm, 2021



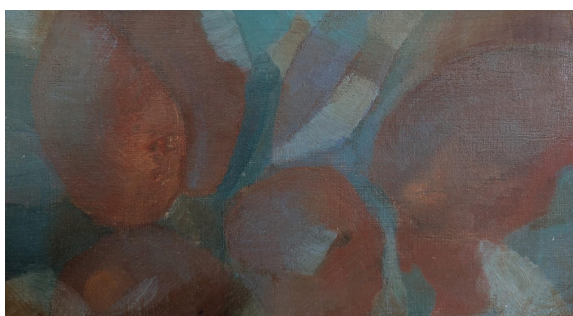
#11
egg tempera on gesso board
18 x 21 cm, 2021



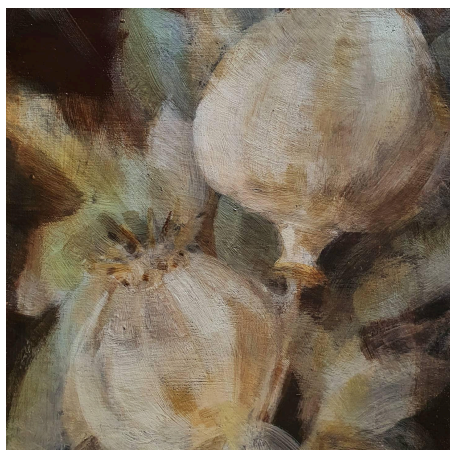
#12
egg tempera on gesso board
18 x 21 cm, 2021



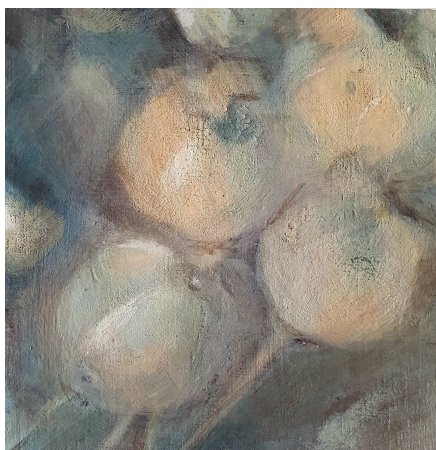
#13
egg tempera on gesso board
18 x 21 cm, 2021



#14
egg tempera on gesso board
15 x 26.5 cm, 2021



#15
egg tempera on gesso board
2021, sold



#16
egg tempera on gesso board
15 x 15 cm, 2021